

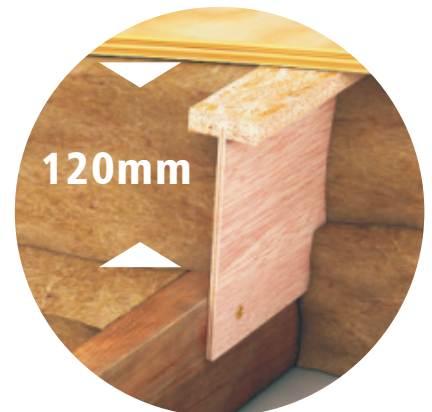
# LOFT EXPANDER

Create Extra  
Insulation &  
Storage Space  
in Your Attic

**For example, simply installing a SE12 joist expander, increases joist depths by 120mm!**



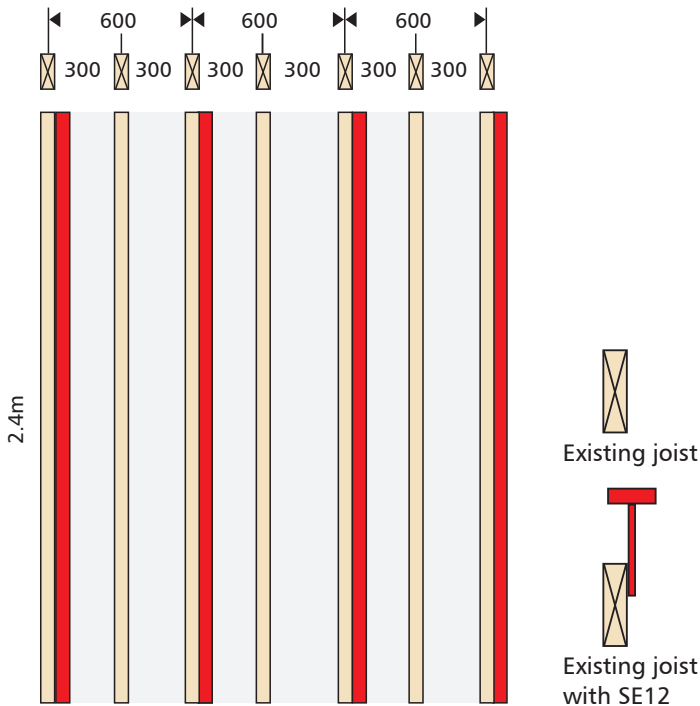
- Upgrade attic insulation and create extra storage space
- Slim, lightweight engineered solution
- Increase joists in one easy step
- Efficient alignment of uneven joists
- Time saving, one man installation possible
- Easy to handle 2.4m lengths
- Patented technology, engineered and developed in Germany
- Reduce heat loss through joists
- Strength of joist expander third party tested and approved



# LOFT EXPANDER

## SE12 Joist Expander

By using the SE12 and increasing the insulation on an existing joist, heat loss through the attic can be halved!



**By adding the SE12 Joist Expander joist depths can be increased by 120mm allowing for an additional 120mm of insulation to be safely installed.**

Approx. Price per m<sup>2</sup> @ 400mm centres: €16.00

Approx. Price per m<sup>2</sup> @ 600mm centres: €12.00

Prices exclude VAT and delivery



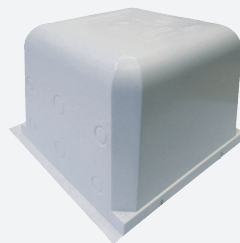
The SE12 Joist Expander allows homeowners to increase insulation levels and create a safe storage space in their attics. The principle of the system is to simply fix the SE expander to an existing joist. This increases the depth of insulation which may be installed without the risk of compressing it. The SE expander is supplied in 2.4m lengths.

### Installation:

The SE12 is simply fastened to the joists. It is recommended to fasten the SE12 to the joist with a 4.0 mm x 40 mm Spax screw, to be staggered and fixed at no more than 180mm centres. For storage, OSB or similar boards must be at least 18mm thick and fixed securely to the SE12.

## TOP TIPS

**Tip 1** - If you have downlighters you can create an airtight seal around them by installing Optime Downlight Housing boxes



**Tip 2** - Install an airtight attic hatch such as Wellhöfer which will give you easy access while minimising heat loss.



T. 046 9432104

[www.ecologicalbuildingsystems.com](http://www.ecologicalbuildingsystems.com)

Main Street, Athboy, Co Meath

[info@ecologicalbuildingsystems.com](mailto:info@ecologicalbuildingsystems.com)